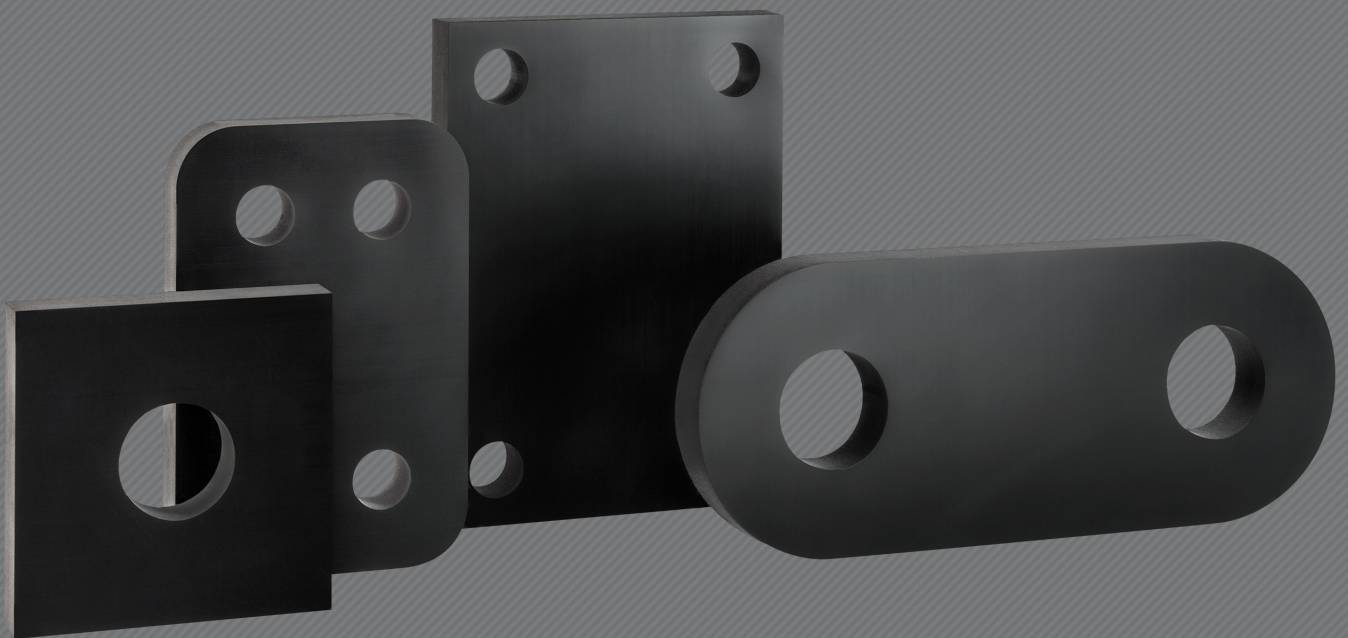




ELASTOMER SERVICE ZENTRALE  
WILFRIED BECKER GMBH



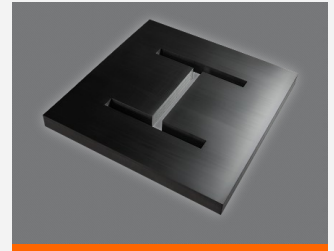
ESZ-Sepatherm | Against constructive thermal bridges  
Product information

## ESZ-Sepatherm | Against constructive thermal bridges

### Product information

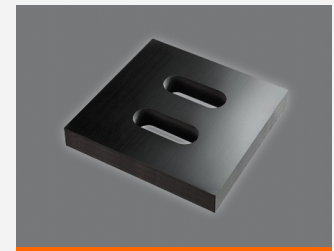
#### Application purpose

The ESZ-Sepatherm is a dimensionally stable lining plate designed for the static mounting of components and in particular for component separation. Thus ESZ-Sepatherm avoids contact corrosion of metallic components and constructive thermal bridges in component connections, e.g. reinforced concrete-steel.



#### Deformation

For the maximum permissible loads, an average bearing deflection is to be expected at  $\leq$  of 5%. ESZ-Sepatherm is therefore ideally suited for the mounting of components sensitive to settlement.



#### Delivery form

All cut shapes for ground plan surfaces occurring in steel construction and precast reinforced concrete construction with drill holes, cut-outs, oblique cuts, etc.  
Bearing thickness: 5 / 10 / 15 / 20 mm



Weilerhöfe 1  
41564 Kaarst-Büttgen  
Phone: +49 (0) 2131 758100  
Fax.: +49 (0) 2131 758111  
info@esz-becker.de

## ESZ-Sepatherm | Against constructive thermal bridges

### Product information

#### Material description

Highly crystallized thermoplastic with high strength and stiffness, low water absorption and good wear resistance with low thermal conductivity.

#### Physical properties

Density: 1,41 g/cm<sup>3</sup>  
 Tensile strength: 3000 N/mm<sup>2</sup>  
 Compressive strength: ≤ 1700 N/mm<sup>2</sup>  
 Heat conductivity: 0,22 W/(m x K)  
 Temperature application range: -30°C bis +100°C  
 coefficient of thermal expansion: 9 - 10 x 10<sup>-5</sup> / K



#### RFP text

Supply and installation of ESZ-Sepatherm between steel and reinforced concrete parts.

bearing thickness:(5/10/15/20) \_\_\_\_\_ mm  
 plate format a x b: \_\_\_\_\_ mm  
 Holes/cutouts:: \_\_\_\_\_ piece  
 Quantity: \_\_\_\_\_ piece



Weilerhöfe 1  
 41564 Kaarst-Büttgen  
 Phone: +49 (0) 2131 758100  
 Fax.: +49 (0) 2131 758111  
 info@esz-becker.de